



Refill Instructions

Resin exhaustion is indicated by the TDS meter reaching in excess of 20ppm. The resin will still continue to filter the water and you can achieve relatively spot free results between 20ppm and 50ppm but the water quality will quickly deteriorate after it reaches 20ppm. **The Rinse Pimp shown in the photographs is the Rinse Pimp 1 but the instructions have been adapted for the Rinse Pimp 2.**

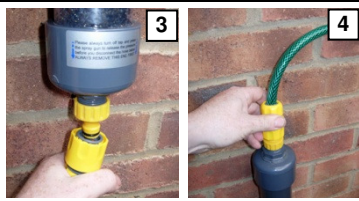
Step 1

Remove the top tap adapter complete with internal screen, [fig 1] and exchange for the tap adapter (provided) that does not contain a screen [fig 2]



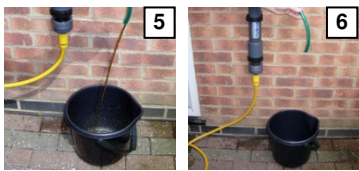
Step 2

Connect a hose to the bottom of the Rinse Pimp [fig 3]. Next connect the short hose provided to the top of the Rinse Pimp [fig 4] and place the other end of the hose into a bucket.



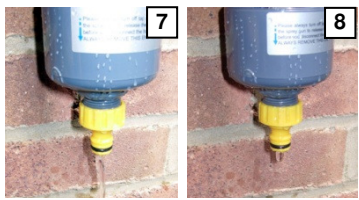
Step 3

Turn on the tap slowly and wash the resin into the bucket. Wait for the water to change from straw coloured [fig 5] to clear (resin free), then turn off the tap [fig 6]



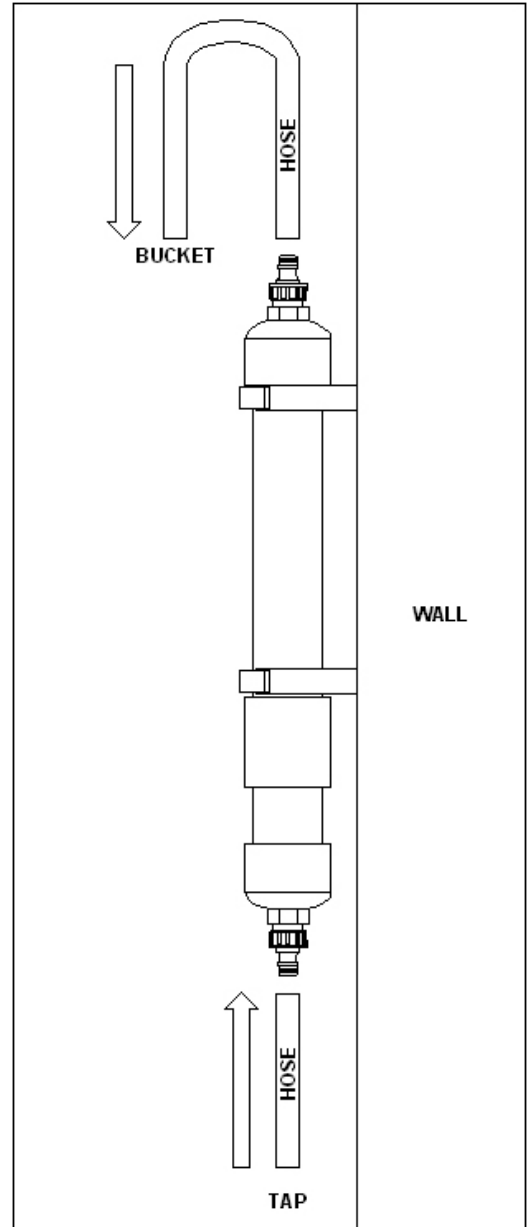
Step 4

Remove the hose from the top of the Rinse Pimp. Next place the bucket underneath the Rinse Pimp. Then drain remaining water from the Rinse Pimp into the bucket by removing the bottom hose [fig 7 + 8]



Step 5

Remove the top tap adapter and place the funnel provided into the top of the Rinse Pimp. Next pour the resin into the funnel [fig 9] and add a little water to aid the resin flow. Finally replace the top tap adapter complete with internal screen [as shown in fig 1]. Your Rinse Pimp is now ready to be used again.



It is important to check the resin in the Rinse Pimp regularly – once it is exhausted and the TDS meter shows in excess of 20ppm it will no longer remove the impurities from the water and will be ineffective.